

Pinellas Trail User Count Data Summary



Automated Trail Counter Data Collection Period:
September 1st – 30th (30 days)

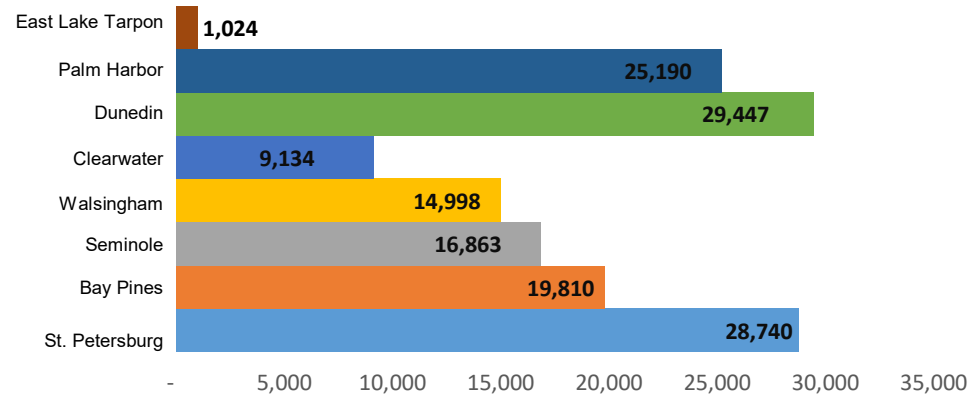
September 2021

30-Day Count Total: **145,206**
Daily Average Users: **4,840**

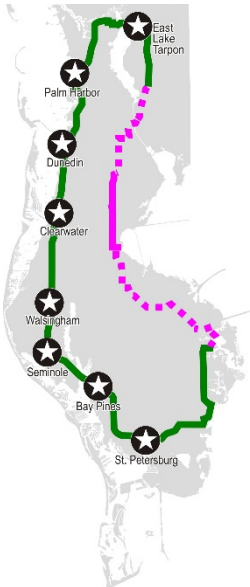
Highest Daily Totals:

- #1 – Saturday, September 25th (St. Petersburg – 1,941)
- #2 – Saturday, September 4th (Dunedin – 1,905)
- #3 – Sunday, September 5th (Palm Harbor – 1,414)

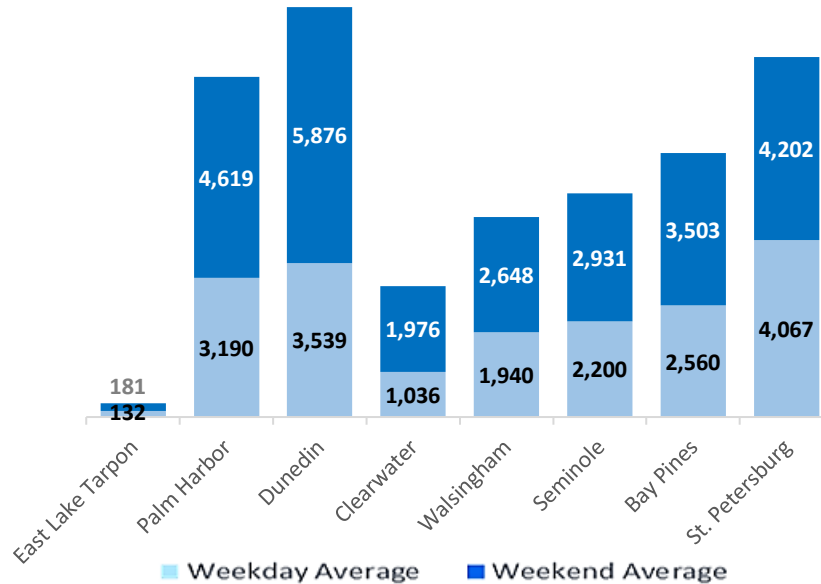
September Trail Users by Counter Location



Counter Locations



Weekday & Weekend Profile

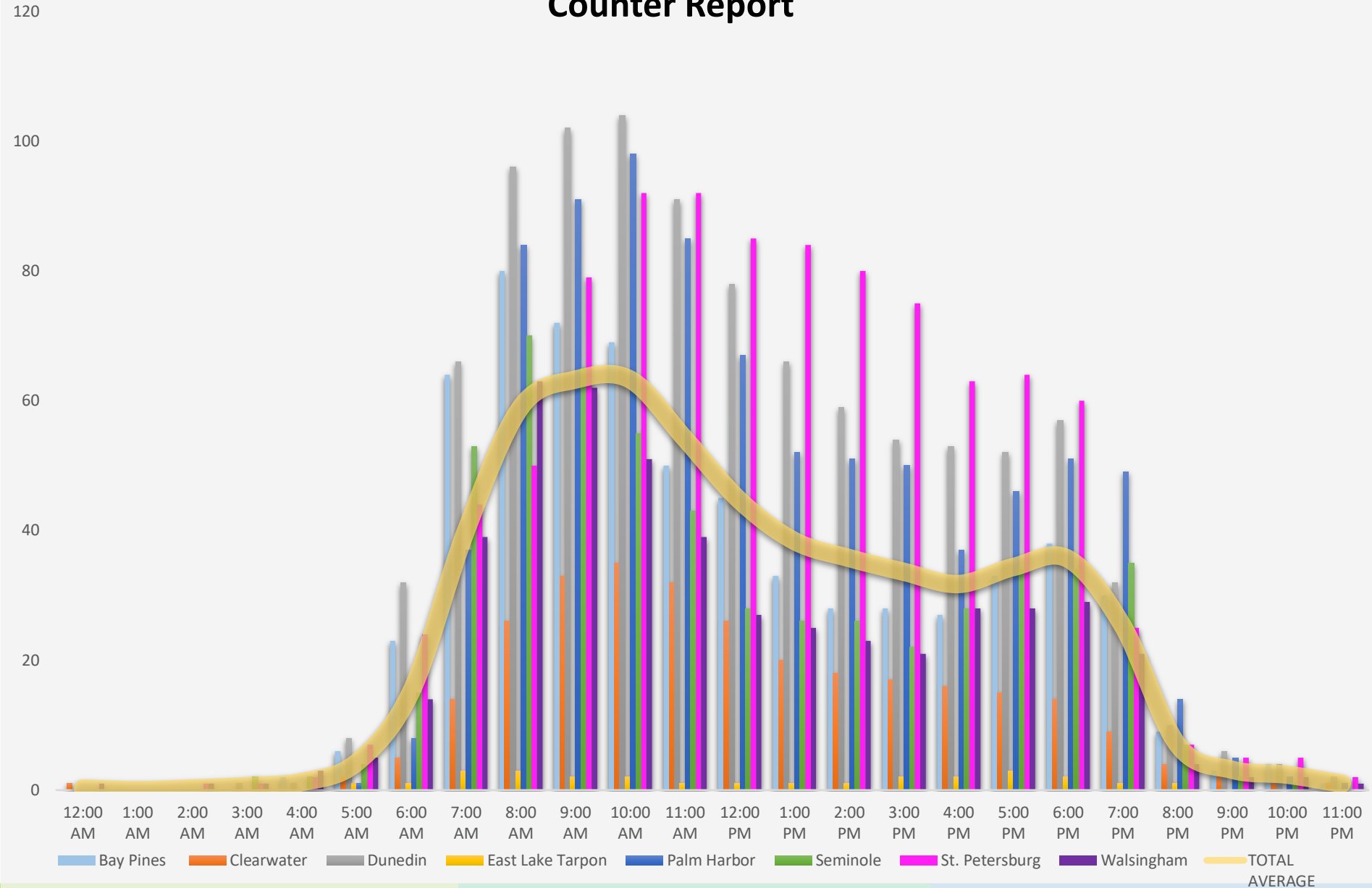


Trail User Mode Split

Counter Location	Walking (Pedestrian)	Bicycling (Bicycle)
East Lake Tarpon:	1%	99%
Palm Harbor:	20%	80%
Dunedin:	16%	84%
Clearwater:	1%	99%
Walsingham:	7%	93%
Seminole:	18%	82%
Bay Pines:	16%	84%
St. Petersburg:	53%	47%

Source: Forward Pinellas *September 2021*
National Weather Service: [September 2021](#)

September 2021 Average Hourly Counter Report



Pinellas Trail User Count Data Summary

Automated Trail Counter Data Collection

Period: January – September, 2021 Data*

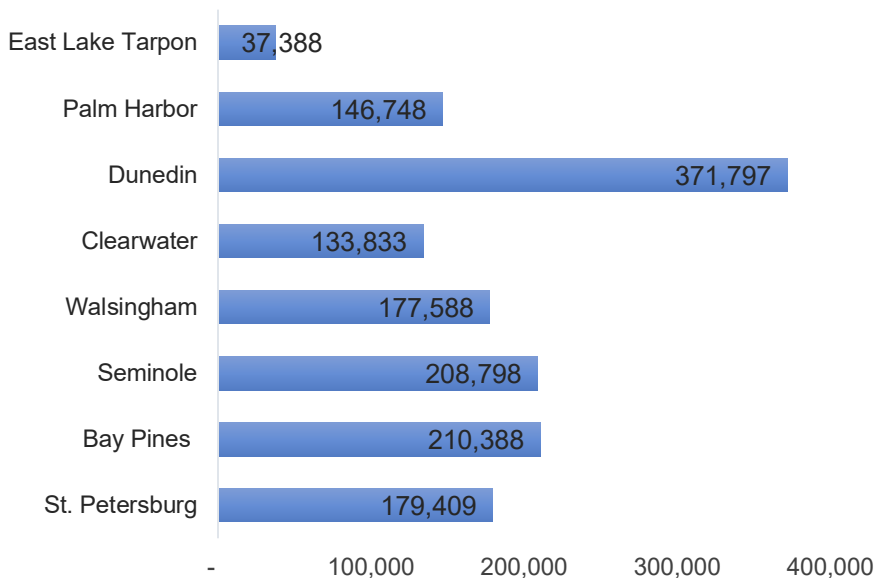


January-September 2021

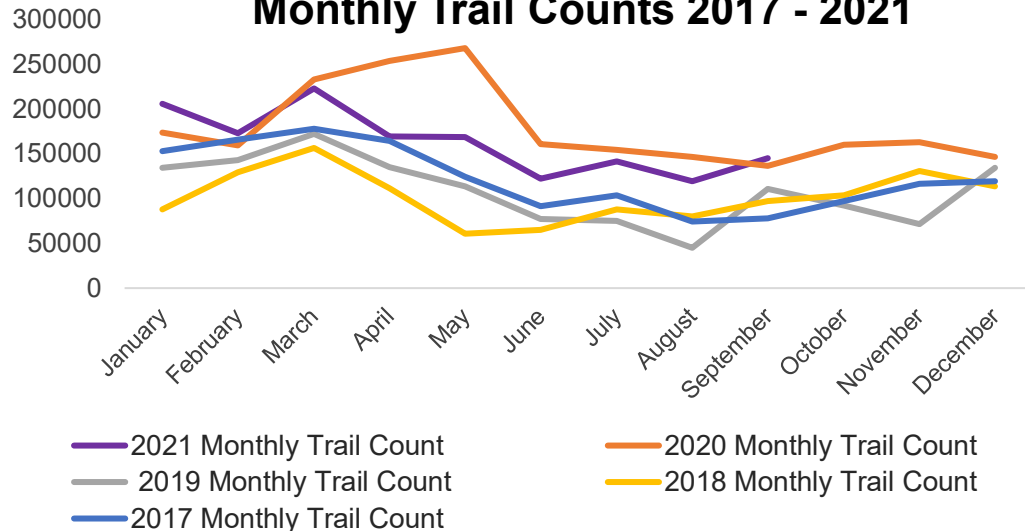
Total Count:

1,465,949

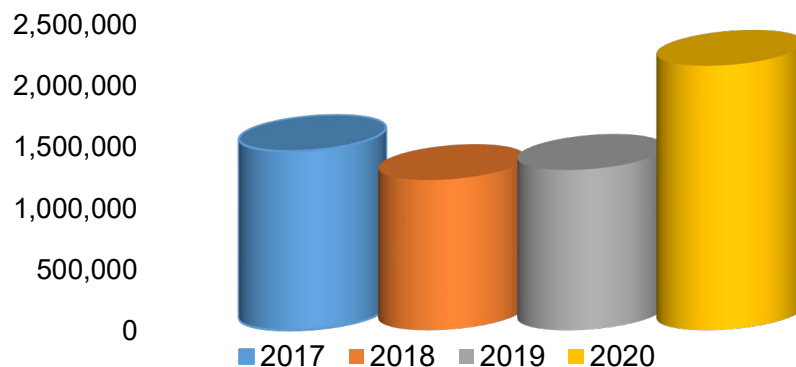
Year to Date Data Per Location



Monthly Trail Counts 2017 - 2021



Pinellas Trail Use 2017 – 2020



* Technical issues with several counters in 2019, 2020 and 2021 resulting in several missing days of data.